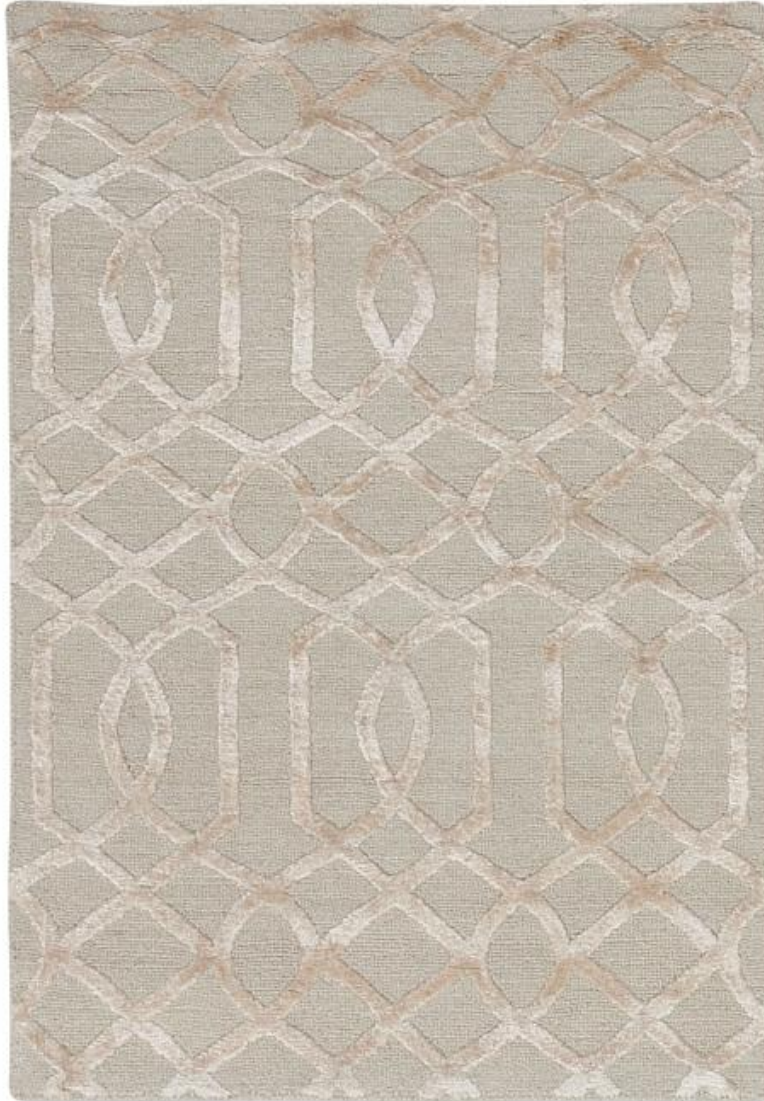


SHALOM BROTHERS



Kamala Collection

617-E - Ivory

Content: Wool & Manmade Silk

Quality: Hand Knotted

Country of Origin: India

Sizes Available:

2' X 3' - sample swatch, Made To Custom Only, Made to Custom Specifications, Made to Custom - Oversizes, Made to Custom - Shapes, Made to Custom - Runners, Short Lead Time,