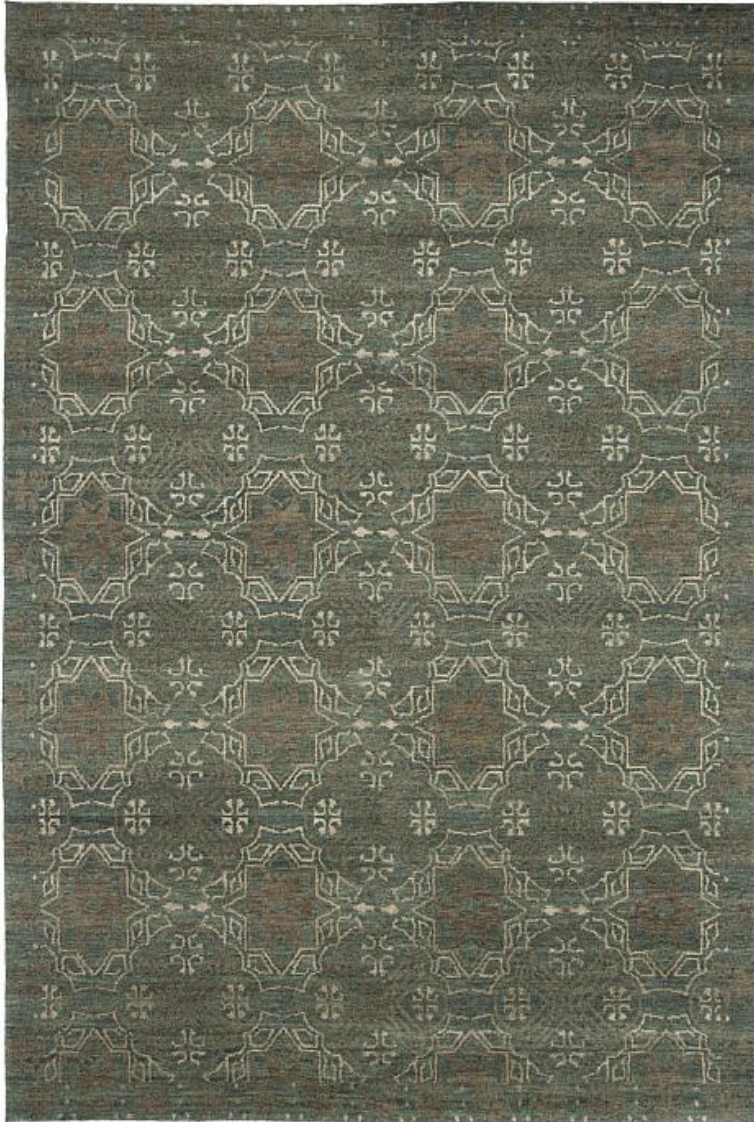


SHALOM BROTHERS



Broadway Collection

W6 - Sage

Content: Wool

Quality: Hand Knotted

Country of Origin: India

Sizes Available:

2' X 3', 4' X 6', 6' X 9', 8' X 10', 9' X 12', 10' X 14', Made to Custom Specifications, Made to Custom - Oversizes, Made to Custom - Shapes, Made to Custom - Runners, Short Lead Time,